

Dementia Care Navigator CALD – Specialist Nina Catalano



by Unknown Author is licensed under

Session overview

- Dementia Care Navigator
- What people need
- Facts and stats
- Dementia
- Key Findings
- Communicating
- Case studies
- Summary

Dementia Care Navigator CALD Specialist Western Sydney

- A better way to connect with services and support for culturally and linguistically diverse communities
- Provide education re funding and services

Dementia Care Navigator – CALD Specialist

- The Navigator role plays an integral part in the Western Sydney Primary Health Network
- Primarily for Australians from culturally and linguistically diverse backgrounds and special need communities where English is not their first language
- 2-year trial funded by Western Sydney Primary Health Network

Benefits to the client

- Dedicated Dementia Specialist
- Group sessions to help navigate living with dementia at all stages, including connecting with government-funded services (My Aged Care, National Disability Insurance Scheme, etc.) and other service providers
- Tailored and continuous one-on-one support available in person, via phone, email and other online forums

Benefits to the client

- Information about local services
- Expert and unbiased information
- Translated resources and ability to work with interpreters
- Support for people of all ages
- Support from pre-diagnosis to Palliative Care

Diversity in Action

Countries

Armenia **Indonesia**
Sri Lanka Turkey
Afghanistan **Greece**
Tokelau Samoa
Cyprus **China**
Lebanon **Italy** Sudan
Finland Korea **Spain**
Hong Kong **Malta**
Fiji **Egypt**

Languages

Farsi Dari **Hindi**
Arabic **Mandarin**
Cantonese Italian
Turkish Spanish
Fijian Hindi
Oceanic Languages
Samoan

Facts and stats

Every 3 seconds
someone in the world
develops dementia.

In Australia an estimated
250 people
join the population
with dementia each day.

There are more than
472,000 people
living with dementia
in Australia.

In 2021 there is an estimated
28,300 people
with younger onset
dementia in Australia.

By 2028 there will be
an estimated
590,000 people
with a diagnosis of
dementia in Australia.

By 2058 it is estimated that
1,076,000 people
will have a diagnosis of
dementia in Australia.

What is dementia

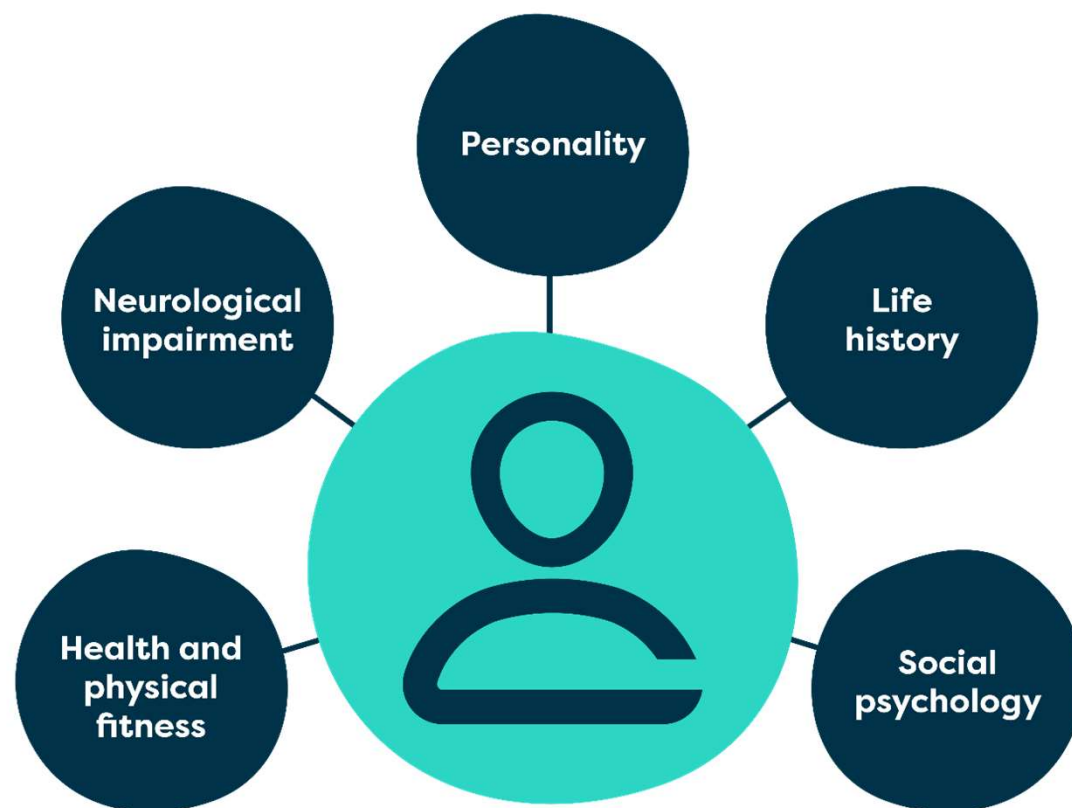
Dementia is an umbrella term to describe a **set of symptoms** caused by brain disease.

Typical signs of dementia are gradual **changes in thinking** that get in the way of a person doing everyday things.

No two people are affected in exactly the same way.

It is not a normal part of ageing.

Experience of dementia



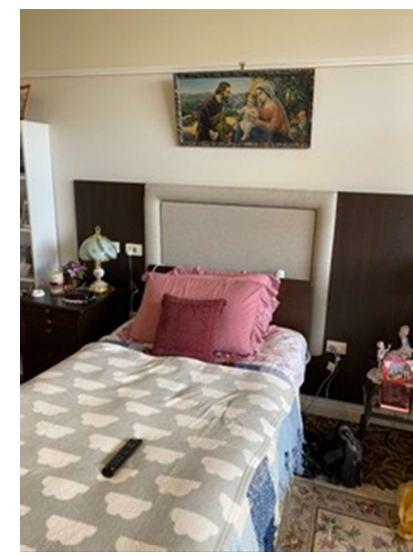
Person with dementia

The Enriched Model of
Dementia Brooker, D (2007)

Communication in the CALD space

- Connection
- Never presume
- Relationship building
- Trust
- What people need

Case Studies



Family Conference

Four siblings online across areas

Indian Zoom Information Session

- Information session on Dementia and services

CALD Link Workers

- Link worker model and partnership

Dementia Australia – Services and Information

- dementia.org.au
- dementia.org.au/resources/videos
- NSW.Referrals@dementia.org.au



National Dementia Helpline
1800 100 500



For language assistance
call **131 450**

Find us online
dementia.org.au

